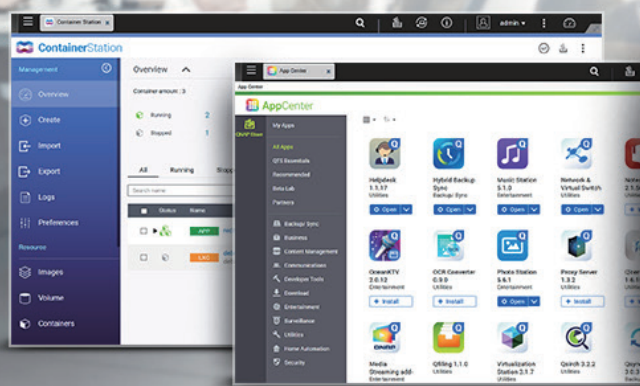


QNAP

High-capacity Storage Solution

TS-1635AX

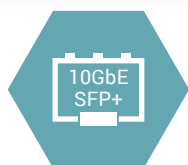
10GbE-ready NAS with comprehensive business application



Quad-Core
1.6
GHz

8GB DDR4
Max 16GB RAM

MARVELL



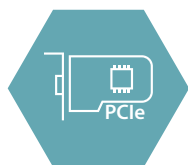
10GbE-ready for higher performance

The two built-in 10GbE SFP+ ports empower mission-critical applications such as databases and large data transfer/storage.



Boost performance with SSDs and Qtier

Install up to four 2.5-inch SSDs and two M.2 SATA SSDs to enable SSD caching or Qtier to optimize NAS performance, accelerate data access, and improve system efficiency.



PCIe expansion to extend NAS functionality

The TS-1635AX comes with two PCIe 3.0 slots that allow users to install a QM2 card, network cards, and USB 3.1 Gen2 (10Gbps) cards to expand NAS functionality.



High-flexibility virtualization and virtual switches

The TS-1635AX supports containers (LXC and Docker®) and Linux command-line interface (CLI) virtual machines (VMs) for deploying diverse virtualization applications.

QNAP SYSTEMS, INC.

Copyright © 2018 QNAP Systems, Inc. All rights reserved.

www.qnap.com