

Features



Item	Details	Feature	Details
Supported Formats	H.264, H.264+, H.265, H.265+, MJPEG	Playback	<ul style="list-style-type: none">Multi-window synchronous/separate playback, Playback speed control.Includes event playback, smart event search, and face search.
Multi-stream	Supported	Export function	Segment export, export to NAS or computer
Recording mode	Full, Event	Event alert triggers	<ul style="list-style-type: none">Built-in: face recognition, people detection, density detection, and by API trigger.Camera: includes license plate recognition, dynamic detection, and line crossing detection. Refer to the compatibility list for camera IVA features/ Multiple triggers and time rules can be supported.
Camera support	More than 9,000 & ONVIF profile S/T/G devices. RTSP & RTMP input support	Event alert actions	Includes push notifications, SMS, camera PTZ, event recording, email, and HTTP API.
Viewing clients	NAS HDMI, PC, macOS, and Android & iOS	Recording backup	Recording Vault, myQNAPcloud Surveillance, and normal backup by file.
Layouts	Real-time, playback, e-map, fisheye and 360 surround view lens restoration display Preset layout switching	Central management	Centrally managed by QVR Center (up to 256 servers).
Camera control	PTZ controls, 2-way calls, streaming resolution setting	AI capabilities	<p>Smart Search events</p> <ul style="list-style-type: none">QVR Face: Face recognition, image finding, mask detection, and gender detection.QVR Human: Cross-border detection, area density detection, and statistics. By head or by body. External AI Events integration

Recommendation Models by Channel

Recommended number of channels	16	24	24	36	36	64	200
Models	TVR-AI200	QVP-41C	TS-464U-RP	QVP-63B	QVP-85B	TS-855eU-RP	TS-h1677AXU-RP TS-h2477AXU-RP
Form	Desktop	Tower	Rackmount	Tower	Tower	Rackmount	Rackmount
HDD amount	2	4	4	6	8	8	16/24
Number of channels to watch simultaneously locally + remotely	24	48	48	64	64	64	128
Built-in Channels	16	8	8	8	8	8	8
Ports	1x USB-A 3.2 2x USB-A 2.0 1x 1GbE RJ45 16x 100Mbe PoE (Max 130W.) 1x HDMI™	2x USB-A 3.2 2x USB-A 2.0 2x 2.5GbE RJ45 2x HDMI™	2x USB-A 3.2 2x USB-A 2.0 2x 2.5GbE RJ45 1x HDMI™	1x USB-C 3.2 2x USB-A 3.2 1x HDMI™ 2x 2.5GbE RJ45	2x USB-A 3.2 2x GbE RJ45 1x 2.5GbE RJ45 2x HDMI™	4x USB-A 3.1 2x 2.5GbE RJ45	2x USB-C 3.2 4x USB-A 3.2 4x GbE RJ45 2x 10GbE SFP+ 2x 10GBase-T
Recording bandwidth	200Mbps	300Mbps	288Mbps	500Mbps	700Mbps	400Mbps	1072Mbps

QNAP Surveillance Solution

Transform NVR to AI VMS Hub using QNAP NAS



QNAP SYSTEMS, INC.

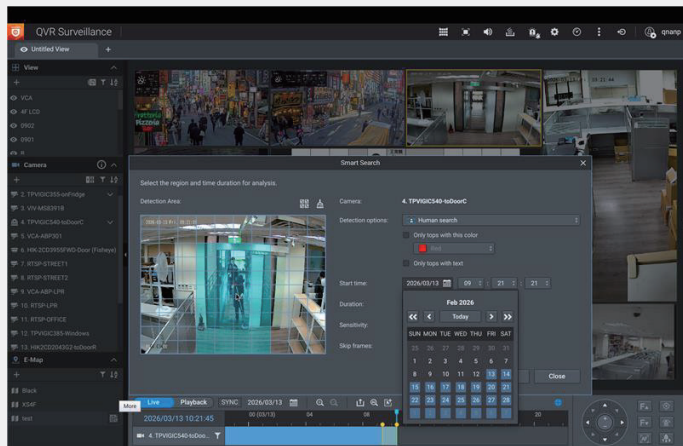
www.qnap.com



Copyright © 2026 QNAP Systems, Inc. All rights reserved.
QNAP® and other names of QNAP Products are proprietary marks or registered trademarks of QNAP Systems, Inc. Other products and company names mentioned herein are trademarks of their respective holders. QNAP reserves the right to modify or revise this guide and related statements at any time. Product specifications and descriptions are subject to change without notice.



Actionable Insights from QVR Client

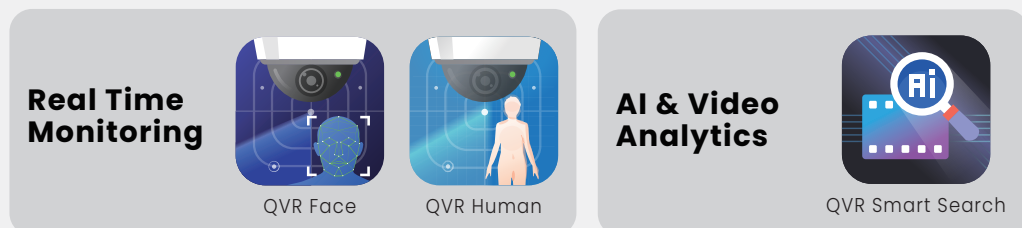


Smart Search in action: Filtering for 'Humans' wearing 'Red' in a specific detection zone.

- Use attribute filters to quickly locate events
- Unified interface for PC, Mac, and mobile
- Real-time alerts allow instant playback.
- Multi-screen support for control rooms.
- Allows simultaneous local viewing and remote multi-user access.

AI Orchestration: Internal & External

- Ready-to-use Built-in QVR Face (Recognition) and QVR Human (People Counting/ Intrusion) powered by local NAS hardware.
- External Integration as a Hub to receive metadata from Third-party AI Cameras or External AI Servers via API/Webhook.
- Provide dashboard to visualize alerts from diverse AI sources (Internal + External) and do actions based on alerts.



How QNAP makes surveillance without stress?

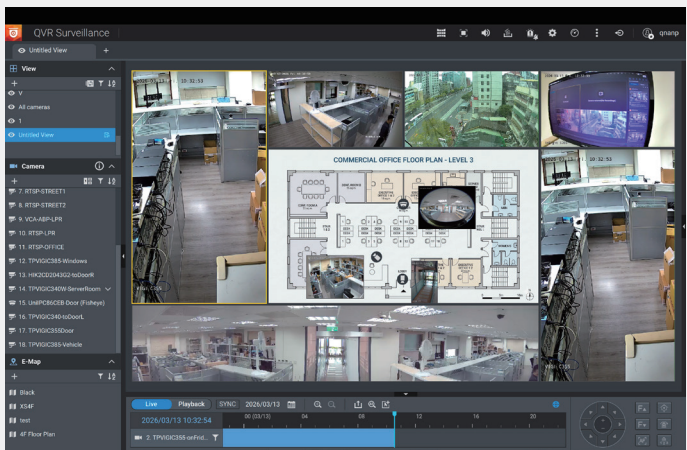
- Lower TCO: Perpetual licenses (CapEx) vs. Recurring Cloud Subscriptions (OpEx). "Active Warm Archiving" reduces long-term storage costs.
- Trust & Compliance: NDAA compliant, ensuring data sovereignty and security.
- Future-Proof Flexibility: Software-defined architecture allows you to add new AI capabilities via Containers without replacing hardware.
- All-in-One convergence (NVR + Storage + AI) reduces power consumption and rack footprint.



Enterprise-Level Infrastructure

- Built-in CPU, NPU, or GPU for event detections.
- Supports high-speed connectivity to handle large volumes of cameras efficiently.
- Quick disaster recovery by disk replacement.
- Storage designed for compliance, enabling long-term retention

Unified & Open VMS



- One license provides full feature.
- Support ONVIF, no camera vendor lock-in.
- Deep API integration for AI events with smart cameras and external AI boxes.
- AD/LDAP integration & central management.
- Detailed permission control for every account & group.