

**QNAP**

# Explore Exceptional Performance with **QSW-M7308R-4X**

## Half-width Rackmount 100GbE Managed Switch

### Up to 1.2Tbps switching capacity

Includes four 100GbE QSFP28 and eight 25GbE SFP28 fiber ports to offer a backbone switching capacity of 1200Gbps for uplinking server rooms.

### Space-saving half-width design

One of the few compact 100GbE switches on the market, the QSW-M7308R-4X can be installed in a 1U rack space with another half-width rackmount switch for efficient physical space utilization.

**Dimensions (HxWxD): 43.3 x 207 x 248.8 mm (1.7 x 8.15 x 9.8 inch)**

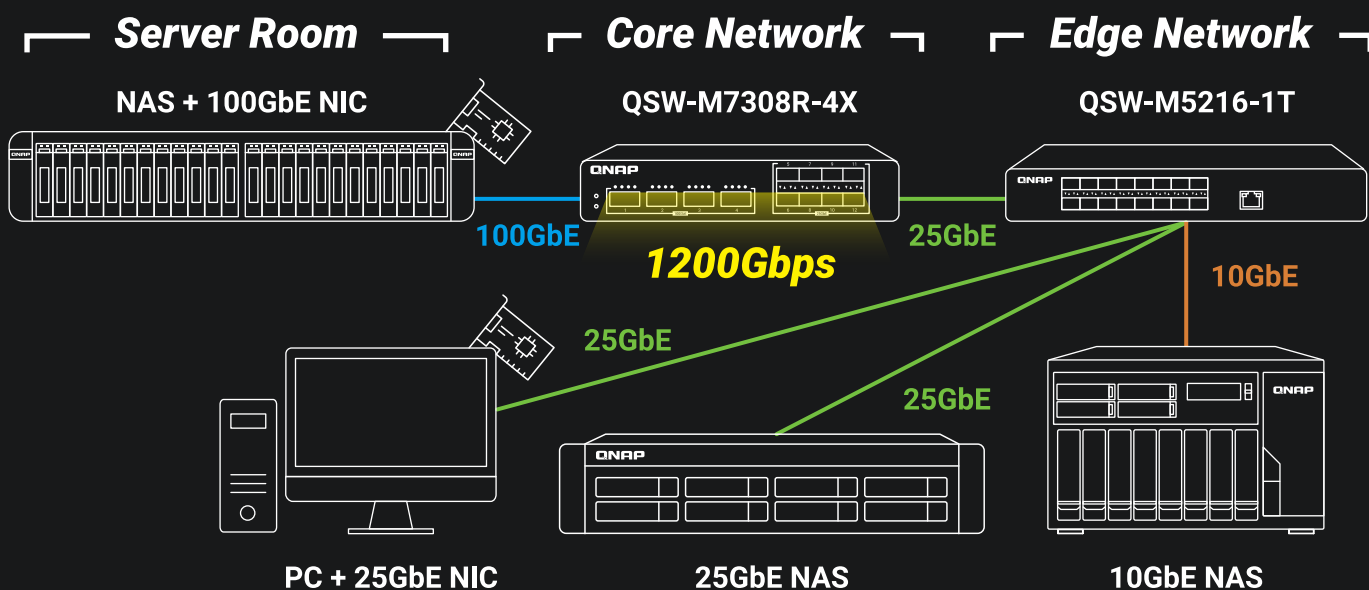
### Low-latency Layer 2 switch with FEC

Offering abundant L2 switching features with user-friendly QSS web management for secure and reliable network connections. FEC is also supported to improve data integrity.

[www.qnap.com](http://www.qnap.com)

# 100GbE backbone

The QSW-M7308R-4X is a 100GbE backbone network with 1200 Gbps switching capacity that can support multiple 25GbE edge networks. You can connect a primary NAS via a 100GbE connection to manage traffic from multiple 25GbE edge networks easily.



## 100GbE Applications

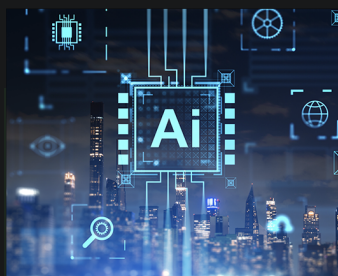
QSW-M7308R-4X switch helps enterprises deploy cost-effective 100GbE networks in their existing infrastructure to boost performance.



**Media professionals**  
4K/8K video transmission



**Storage Centers**  
Big Data applications



**Medium to large enterprises**  
Cloud & AI computing



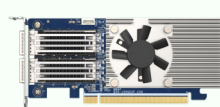
**Smart medicine**  
DNA sequence computing

## Accessories

(Optional)



**Network Expansion Card**  
QXG-25G2SF-CX6



**Network Expansion Card**  
QXG-100G2SF-CX6



**2 for 1 rack mount kit**  
SP-EAR-QSW2FOR1-01



**25GbE SFP28 DAC**  
CAB-DAC30M-SFP28  
CAB-DAC15M-SFP28



**100GbE QSFP28 DAC**  
CAB-DAC15M-Q28



**25GbE SR Transceiver**  
TRX-25GSFP28-SR



**100GbE SR Transceiver**  
Check the compatibility list