

QNAP

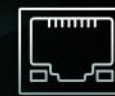
QSW-M2106PR-2S2T

L2 10GbE/2.5GbE PoE++ Managed Switch

Support 90W PoE++ and high-speed network



PoE++



2.5GbE



10GbE



2 in 1U / half-rackmount

Increasing data size. Growing WiFi speed

- Video file/streaming
 - Video format evolution (720p→1080p→4K Ultra HD >8K UHD→10K)

	1080p 60 ProRes HQ	4K ProRes HQ 24	4K RAW BMPC 24	8K RedCode Raw 75
File size per hour	223.77GB	318GB	741.6GB	7.29TB

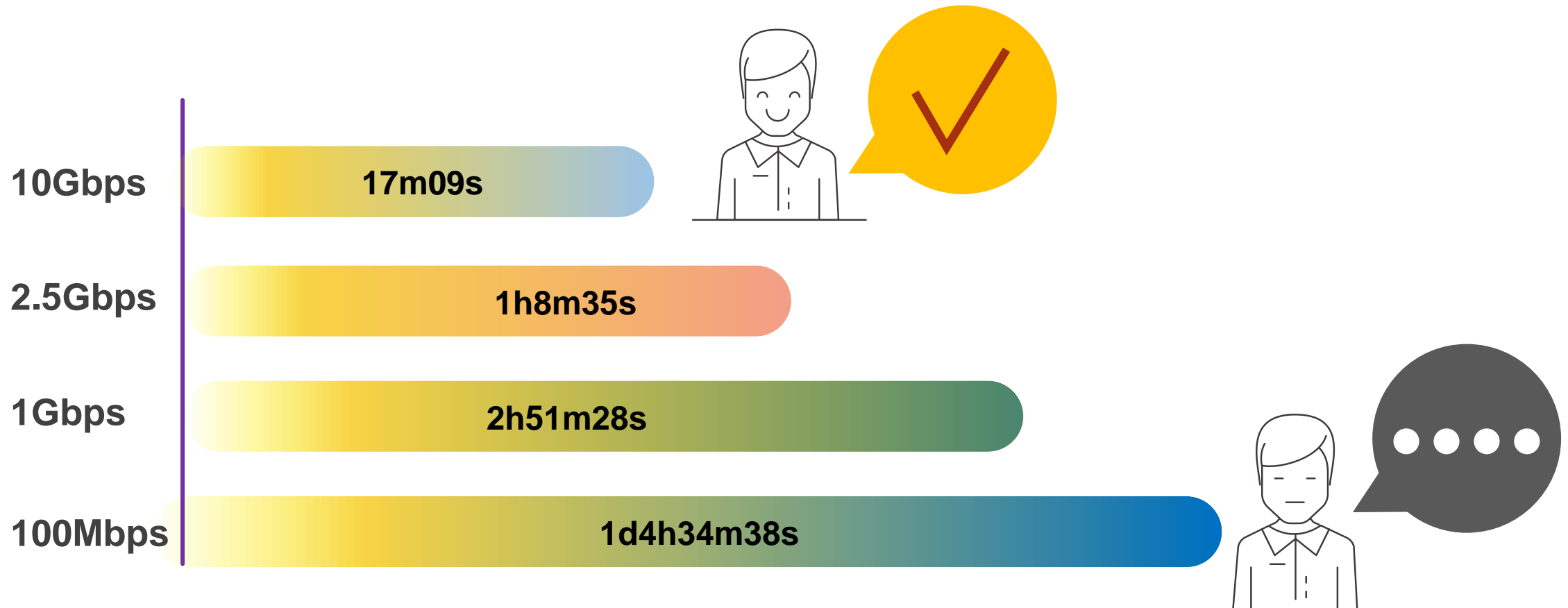
- WiFi: WiFi5→WiFi6→WiFi6E→WiFi7
 - As WiFi technology evolving, wired speed needs to be upgraded too. There are some WiFi6/6E devices equipped with 2.5GbE port even 10GbE port.



How long do you want to wait?

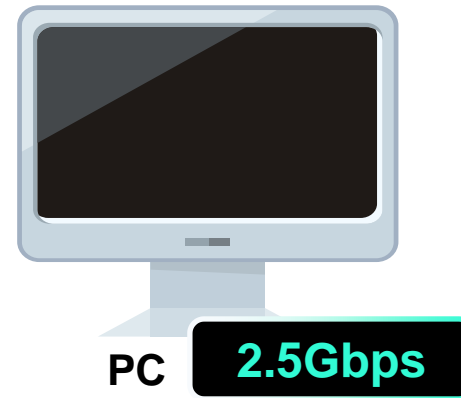
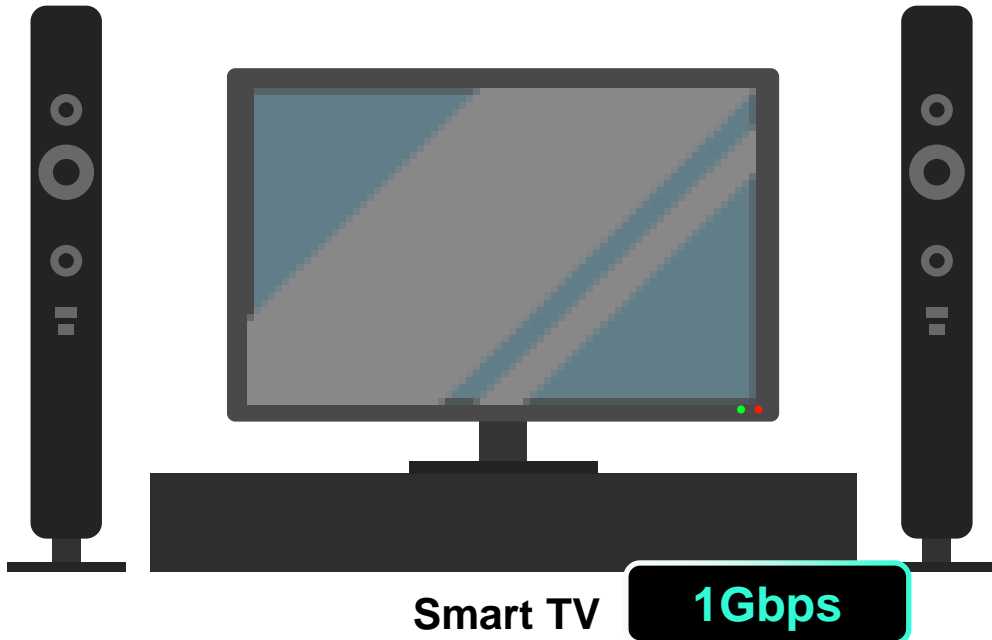
The estimated time to backup 1TB file

Condition: Effective Data Rate 95%, Payload Data Rate (w/ Overhead) 90%



Do you really need all 10GbE switches?

10GbE is fast, but there are still some non-10GbE clients...



1GbE is enough now, how about in the future?

- 2.5GbE is taking off and becoming increasingly available in new computers and networked devices!
- Upgrade to a 2.5GbE switch now to futureproof your network for these devices.



TP-Link EAP670



Netgear AXE7800



TP-Link Archer AX6000



TP-Link Archer GX90



Gigabyte Z490 AORUS MASTER



Apple MacBook

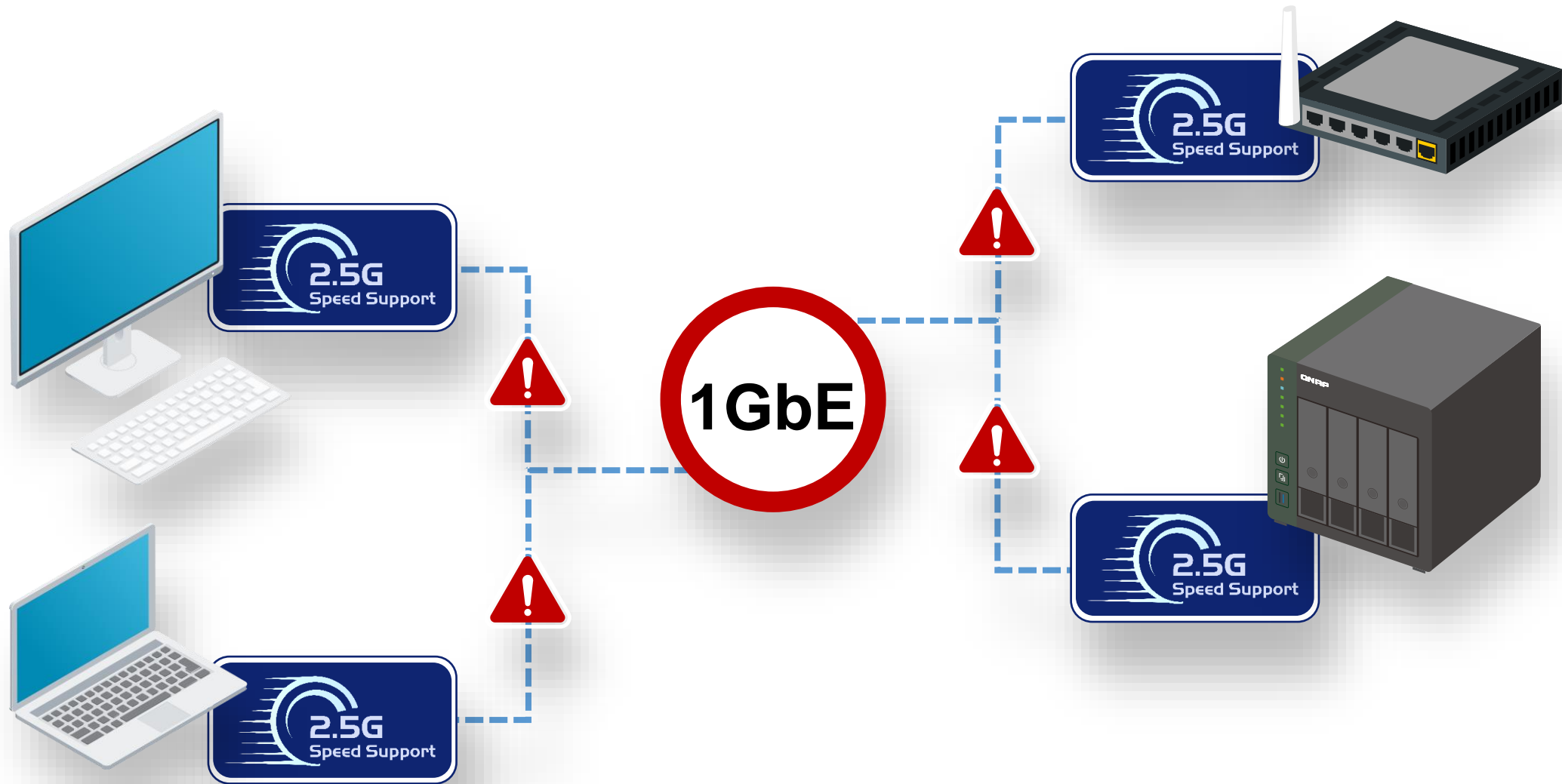


Asrock Z490 Taichi



QNAP TS-431P3 QNAP TS-231P3

Don't let the switch become a network bottleneck



2.5GbE can be used with original Cat5e cables

- Don't need to re-deploy the cables

	CAT 5e	CAT 6	CAT 6A
100M	✓	✓	✓
1G	✓	✓	✓
2.5G	✓	✓	✓
5G	✓	✓	✓
10G	X	✓(55m)	✓



Connect your current devices directly

If the existing devices only have 1GbE or even 100MbE, it can still be connected directly and used without any problem



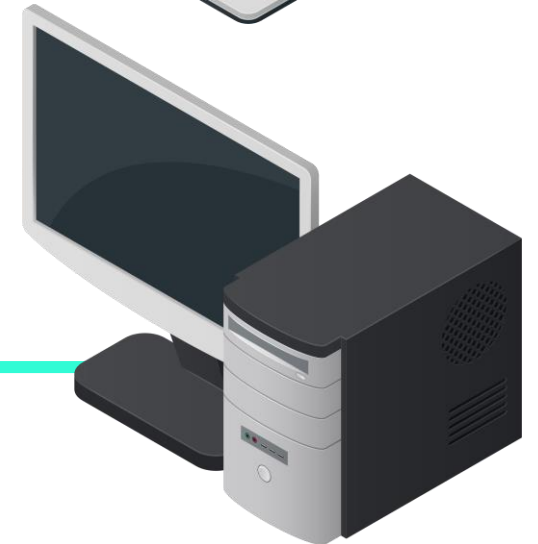
100MbE



2.5GbE



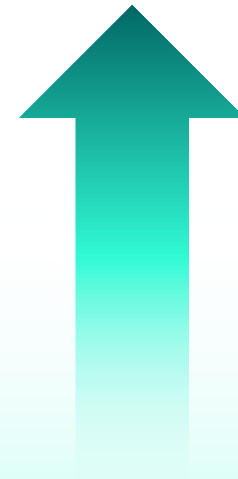
1GbE



Is 802.3at enough?

WiFi spec	Band & Model	PoE Power Consumption
AX8400	Abuba, 650 Series	46.5W
AX6000	Abuba, 550 Series	38.2W
AX8400	RUCKUS, R760	36.08W
AX6000	RUCKUS, R850	31W
AX6000	Netgear, WAX630	30.1W
AX4200	Abuba, 630 Series	29.4W
AX7800	Netgear, WAX630E	27.6W
AX6000	Abuba, 530 Series	26.4W
AX3600	Netgear, WAX620	25.5W
AX3600	RUCKUS, R750	22.34W
AX3000	RUCKUS, R650	21.59W
AX5400	Aruba, 510 Series	20.8W
AX1800	Netgear, WAX610	15.3W

802.3bt(60/90W)



802.3at(30W)

Demand of PoE also getting higher

QSW-M2106PR-2S2T Spec



	QSW-M2106PR-2S2T
Management	Layer2 Web Managed switch
Number of Port	10
2.5 GbE RJ45 (Support 2.5GbE/1GbE/100M)	6, support 802.3bt (90W)
10 GbE RJ45 (Support 10GbE/5GbE/2.5GbE/1GbE/100M)	2, support 802.3bt (90W)
10 GbE SFP+ (Support 10GbE/1GbE)	2
Power budget	310W
Switch bandwidth	110Gbps
Packet buffer size	12Mbit
Jumbo Frame	9Kbytes
MAC table	16K
Fan design	With fan
Form factor	Half-rackmount

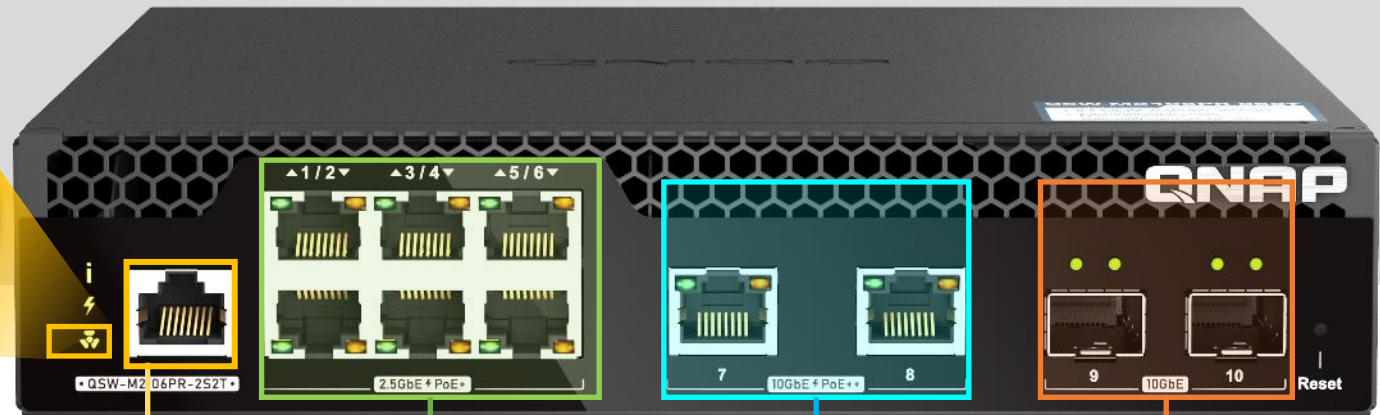
QSW-M2106PR-2S2T Front Panel



Independent Fan status LED

- Considering about it will have a lot of PoE demand, thermal is becoming a serious situation need to be monitored.
- Independent fan status LED can let you know is fan work in normally or not.

PoE power budget up to **310W**



Console port

6 x 2.5GbE RJ45
with 802.3bt(90W)

2 x 10GbE RJ45
with 802.3bt(90W)

2 x 10GbE SFP+

Half rackmount design



Install Single QSW-M2106PR-2S2T
in 1U space of rack

Install QSW-M2106PR-2S2T and QSW-M2106R-2S2T in 1U space of rack



Note1: QSW-M2106PR-2S2T only

Note2: Requires separate 2-in-1U rackmount kit. Please visit <https://shop.qnap.com>.

QSW-M2106PR-2S2T Software highlights



Easy to use GUI design

- Rich functions and easy to use
- Straightforward web design lets user realize the setup logic quickly

The image displays three overlapping screenshots of the QSS Management web interface, demonstrating its user-friendly design and rich functionality.

Overview Screenshot: Shows the main dashboard with a sidebar menu (Overview, Configuration, Port Management, VLAN, Link Aggregation, RSTP, LLDP, IGMP Snooping, ACL, QoS, System) and a main content area with sections for Port Status, System Information (Model Name: QSW-M408-4C, IP address: 172.17.22.63), and Port Traffic (Current Traffic: 0 Mbps).

Port Management Screenshot: Shows the Port Management configuration page with a dashboard, device information, and a table for port status and configuration.

Port	State	Speed
10	Online	Auto
11	Online	Auto
12	Online	Auto

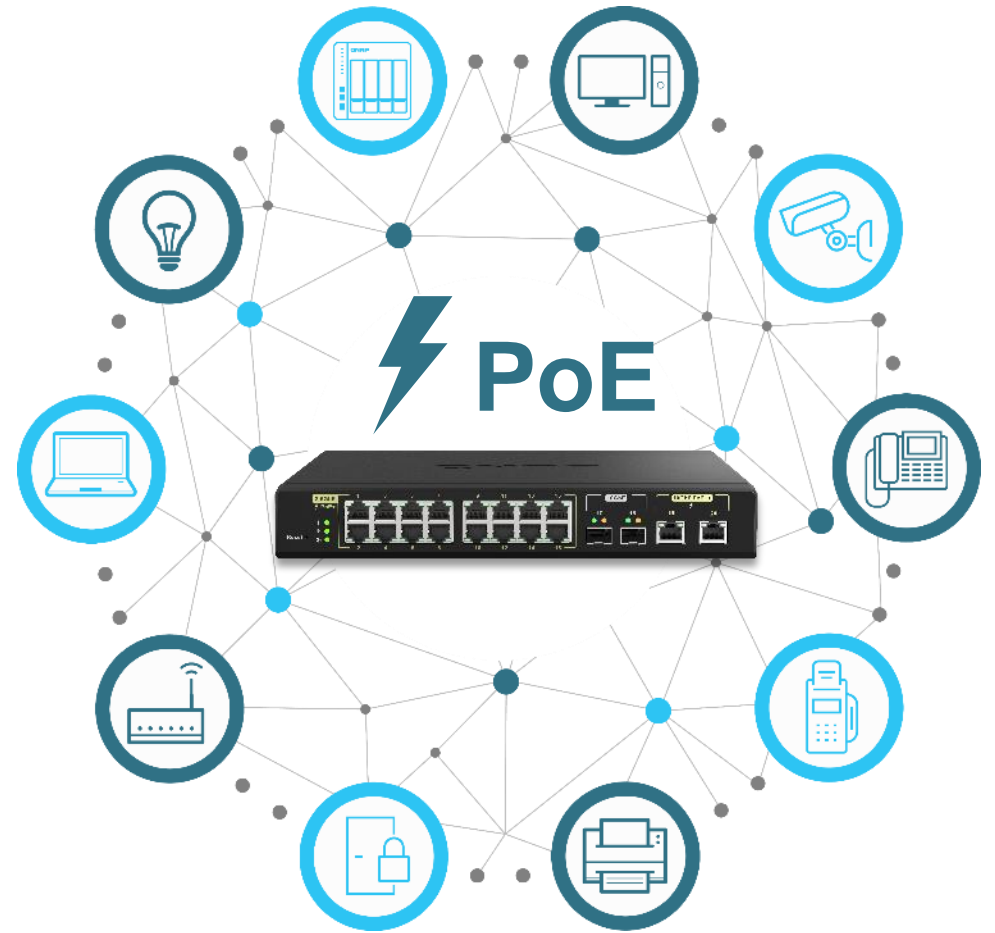
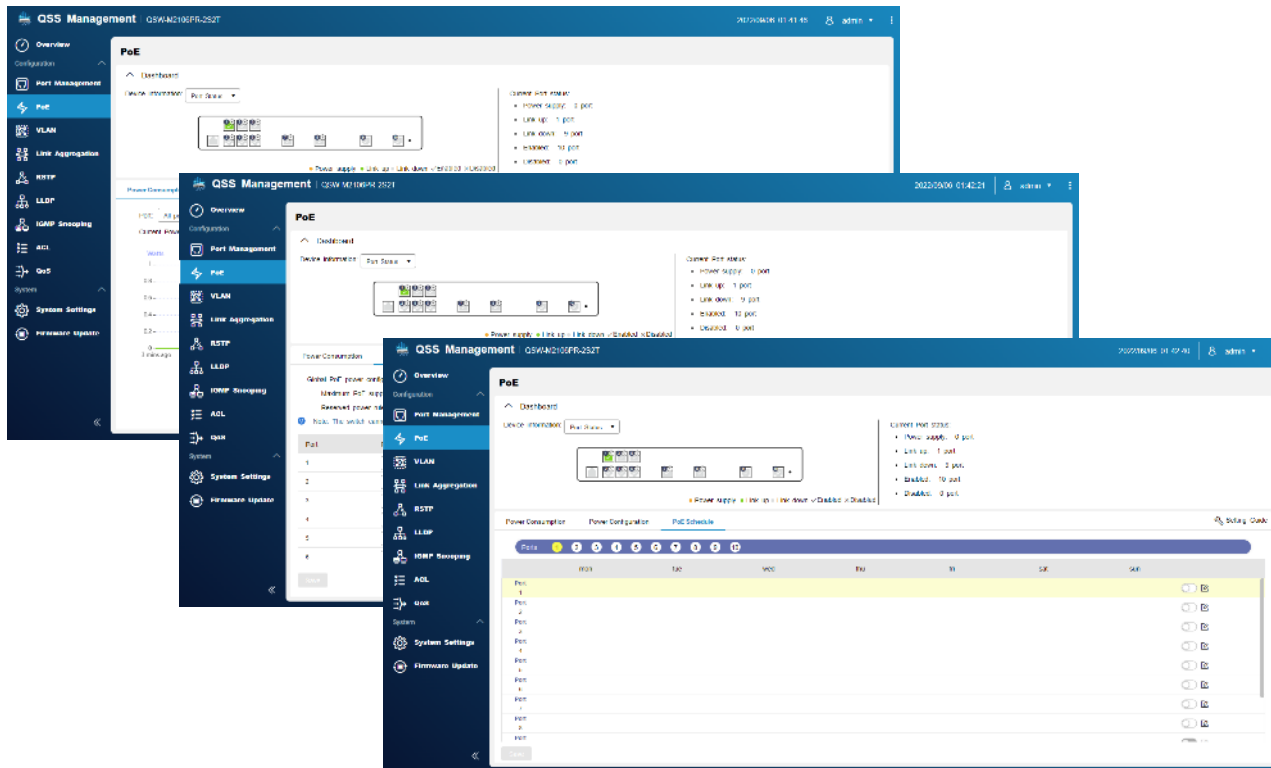
VLAN Screenshot: Shows the VLAN configuration page with a dashboard, VLAN configuration steps, and a table for VLAN ID and port assignment.

VLAN ID	Port	1	2	3	4	5	6	7	8	9	10	11	12	Action
1		U	U	U	U	U	U	U	U	U	U	U	U	

The interface is clean, intuitive, and provides clear instructions for configuration, such as the 6-step process for adding a VLAN.

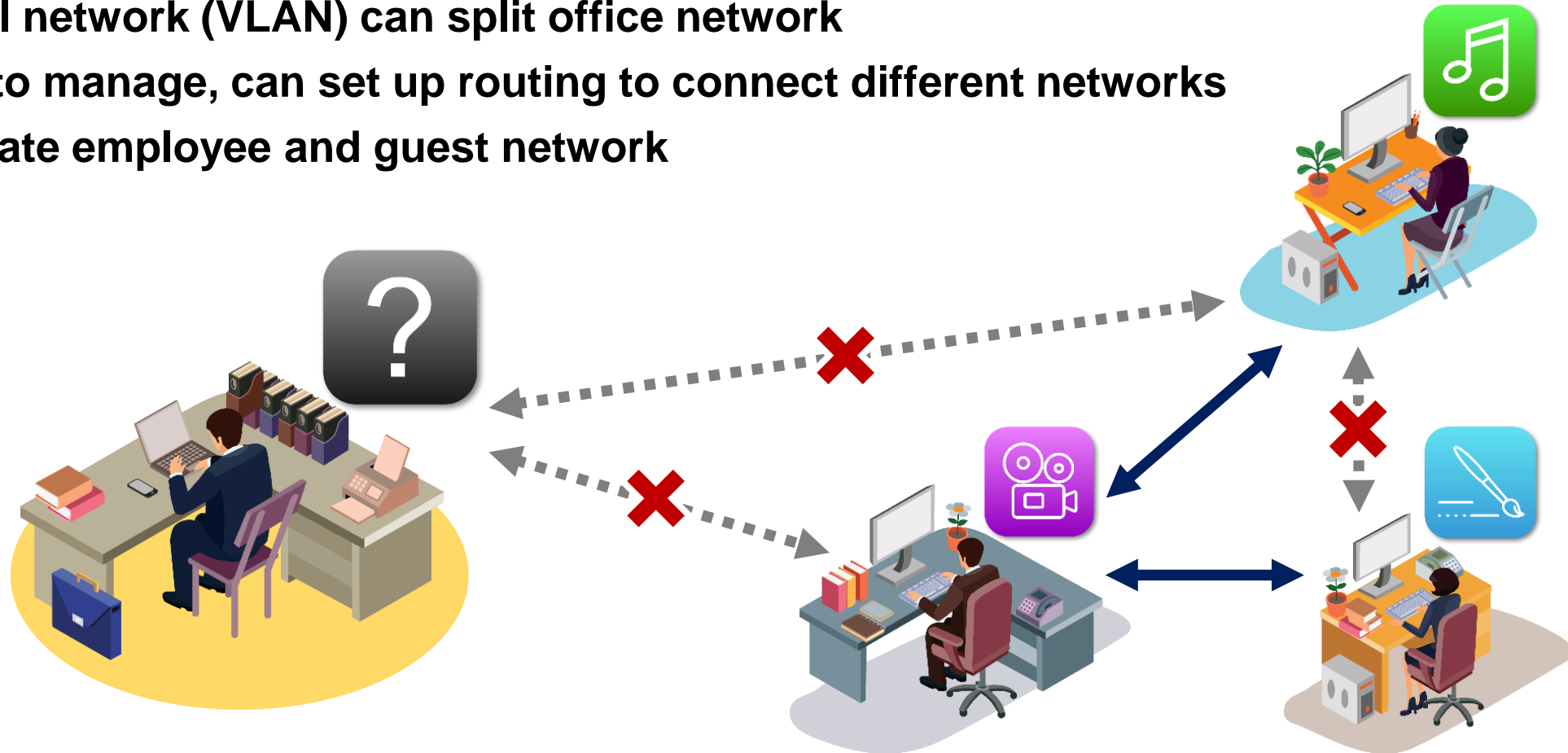
Fully managed your PoE status

- Monitor the PoE power usage
- Power prioritized and remote reboot PD
- Setup PoE scheduling



Split office network into different area

- Virtual network (VLAN) can split office network
- Easy to manage, can set up routing to connect different networks
- Separate employee and guest network



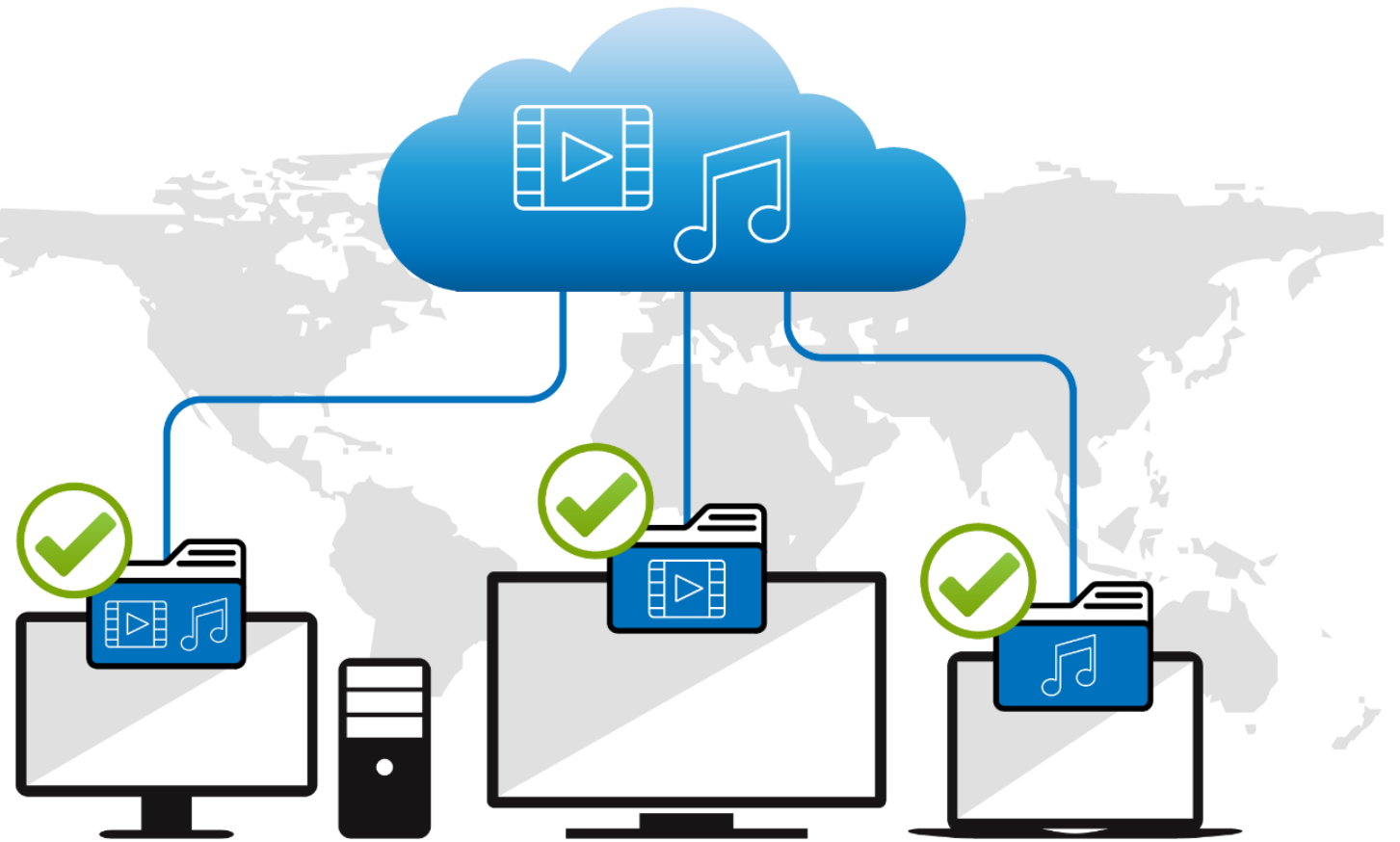
Raise network speed with multiple network cable

- Link Aggregation (LACP) can aggregate multiple network cable into a single logical network
- Quick and direct to have a network more than 10GbE



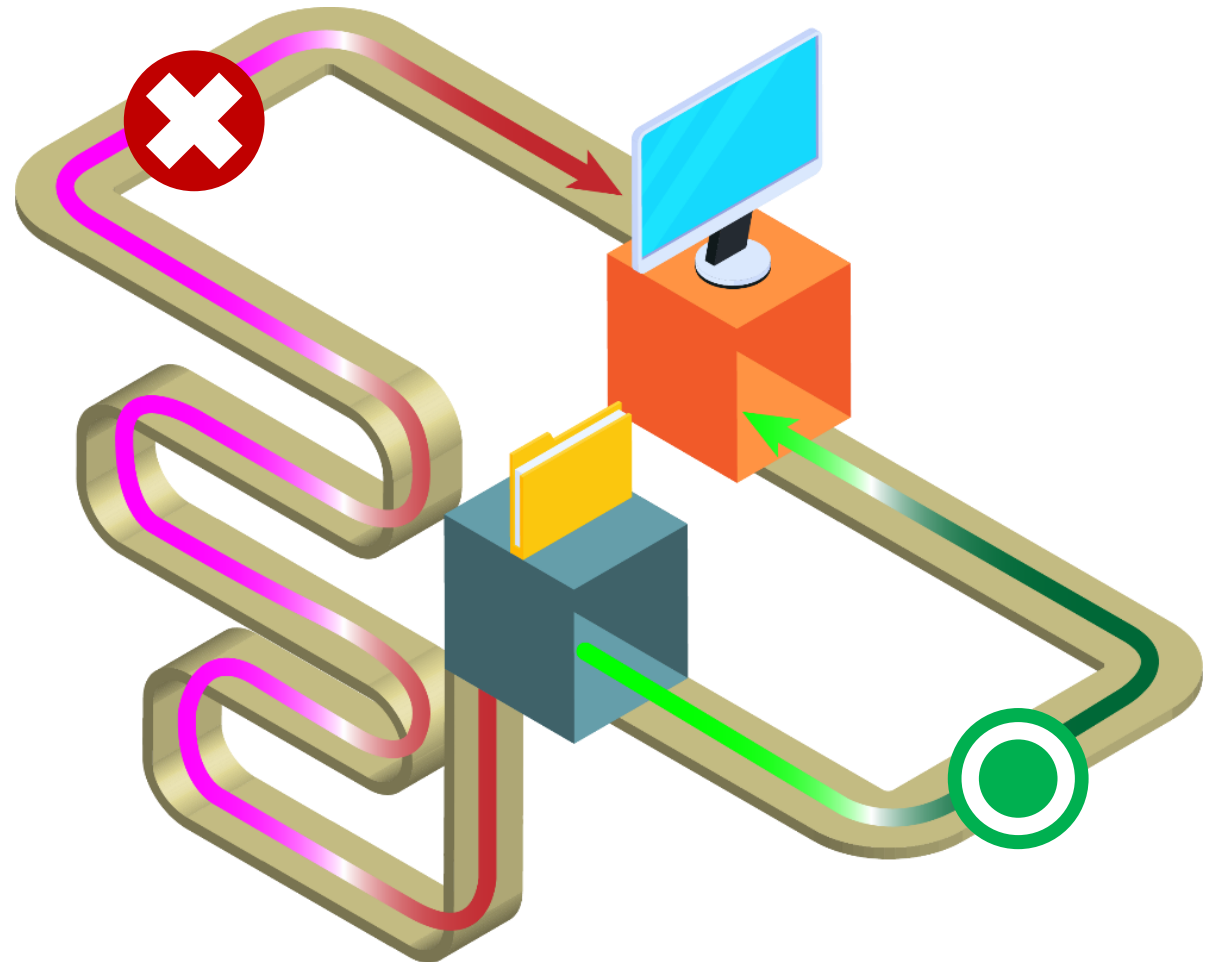
Deliver streaming to dedicate device specifically

- **IGMP snooping** can record streaming request for each end point device
- **Avoid packet lost or wrong stream broadcast**



Always looking for best routing

- Rapid Spanning Tree Protocol (RSTP) live check best networking route
- Always using most effective route for data transfer



Firmware version live check



- **Firmware version auto detect**
- **One-click update**
- **Manual update**

QSW-M2106PRST have more

- Ethernet flow control (IEEE 802.3x) managing packet transfer, avoid packet lost



- Link Layer Discovery Protocol (LLDP), easy to know which devices are connected



- Energy-Efficient Ethernet (IEEE 802.3az) and fan speed control, managing power consumption



QNAP provide
10GbE/2.5GbE total solution
to unleash your network



QNAP 2.5GbE unmanaged switches

QSW-1108-8T



- 8x 2.5GbE RJ45
- Auto loop detected
- Desktop design
- Fan less design

QSW-2104-2T



- 4x 2.5GbE RJ45
- 2x 10GbE RJ45 (2T)
- Auto loop detected
- Desktop design
- Fan less design

QSW-1105-5T



- 5x 2.5GbE RJ45
- Auto loop detected
- Desktop design
- Fan less design

QSW-2104-2S



- 4x 2.5GbE RJ45
- 2x 10GbE SFP+ (2S)
- Auto loop detected
- Desktop design
- Fan less design

QNAP 2.5GbE managed switches

QSW-M2106-4C

NEW



- 6x 2.5GbE RJ45
- 4x 10GbE SFP+/RJ45 combo
- Layer 2 Management
- Desktop design

QSW-M2106-4S

NEW



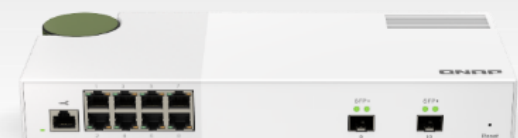
- 6x 2.5GbE RJ45
- 4x 10GbE SFP+
- Layer 2 Management
- Desktop design

QSW-M2108-2C



- 8x 2.5GbE RJ45
- 2x 10GbE SFP+/RJ45 combo
- Layer 2 Management
- Desktop design

QSW-M2108-2S



- 8x 2.5GbE RJ45
- 2x 10GbE SFP+
- Layer 2 Management
- Desktop design

QSW-M2106R-2S2T

NEW



- 6x 2.5GbE RJ45
- 2x 10GbE RJ45
- 2x 10GbE SFP+
- Layer 2 Management
- Rack mount and 2 for 1 design

QSW-M2106PR-2S2T

NEW



- 6x 2.5GbE RJ45 with 802.3bt (90W)
- 2x 10GbE RJ45 with 802.3bt (90W)
- 2x 10GbE SFP+
- Power budget: 310W
- Layer 2 Management
- Rack mount and 2 for 1 design

QSW-M2116P-2T2S



- 16x 2.5GbE RJ45 with 802.3at(30W)
- 2x 10GbE RJ45 with 802.3 bt(90W)
- 2x 10GbE SFP+
- Layer 2 Management
- Power budget: 280W
- Rackmount design

QSW-M2108R-2C



- 8x 2.5GbE RJ45
- 2x 10GbE SFP+/RJ45 combo
- Layer 2 Management
- Rack mount and 2 for 1 design

If more budget and all 10GbE needed

Managed switches

QSW-IM1200-8C



- 3 x powers with redundant design
- 4 x10GbE SFP+
- 8 x10GbE SFP+/RJ45 combo
- Layer 2 management
- Rackmount
- Fan less

QSW-M1204-4C



- 8x 10GbE SFP+
- 4x 10GbE SFP+/RJ45 combo
- Layer 2 Management
- Rack mount design

QSW-M804-4C



- 4x 10GbE SFP+
- 4x 10GbE SFP+/RJ45 combo
- Layer 2 Management
- Rack mount design

QSW-M1208-8C



- 4x 10GbE SFP+
- 8x 10GbE SFP+/RJ45 combo
- Layer 2 Management
- Rack mount design

Unmanaged switches

QSW-1208-8C



- 4x 10GbE SFP+
- 8x 10GbE SFP+/RJ45 combo
- Rack mount design

Tower NAS with embedded 2.5GbE

SMB



TS-873A

TS-673A

TS-473A

Enterprise



TS-h886

TS-h686

SMB



TVS-675

SMB



TBS-464

TS-453E

TS-253E

Home/SOHO



TS-364

TS-462

TS-262

TS-433

Tower NAS with embedded 10GbE

With **10GbE BASE-T**



TVS-h1688X /
TVS-h1288X



TVS-872XT / TVS-672XT
/ TVS-472XT



TS-832PX



TS-431X3

10GbE + 2.5GbE

With **10GbE BASE-T**



TS-i410X

Rackmount network NAS with embedded 2.5/5/10GbE

With 10GbE BASE-T or SFP+



TS-1886XU-RP R2



TS-hx83XU-RP



TS-hx87XU-RP



TS-hx77XU-RP



With 2.5GbE BASE-T



TS-435XeU



TS-873AeU/873AeU-RP/1273AU-RP/1673AU-RP



TS-X64U/X64eU series



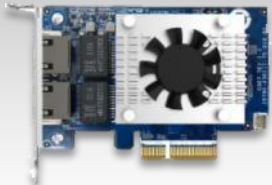
TS-x32PXU

+ 2 x 10GbE SFP+

Network extension : Rich PCIe network extension card

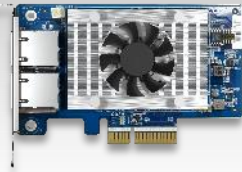
10GbE series

QXG-10G2TB



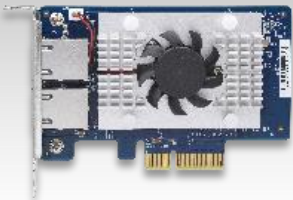
2 x RJ45

QXG-10G2T-X710



2 x RJ45

QXG-10G2T-X107



2 x RJ45

QXG-10G1TB



1 x RJ45

5GbE series

QXG-5G Family



1 x RJ45



2 x RJ45



4 x RJ45

2.5GbE series

QXG-2.5G Family



1 x RJ45



2 x RJ45



4 x RJ45



Network extention : hand carry adaptor

QNA-UC5G1T



USB 3.2 Gen 1

- RJ45 NBASE-T
- 4 speed: 5G/2.5G/1G/100M

USB Plug and play upgrade your PC/Laptop to 5GbE high speed network

<https://www.qnap.com/en/product/qna-uc5g1t>

QNA-T310G1T



Thunderbolt 3

- 10GbE NBASE-T port
- 5 速: 10G/5G/2.5G/1G/100M



Plug and play upgrade your PC/Laptop to 10GbE high speed network, through Thunderbolt 3

<https://www.qnap.com/en/product/qna-tb-10gbe>

QNAP



PoE++



2.5GbE



10GbE

1

2



2 in 1U / half-rackmount

QSW-M2106PR-2S2T is your best choice !

Copyright© 2022 QNAP Systems, Inc. All rights reserved. QNAP® and other names of QNAP Products are proprietary marks or registered trademarks of QNAP Systems, Inc. Other products and company names mentioned herein are trademarks of their respective holders.

