

ADRA NDR Features

- Risk Assessment
- Risk Management
- Threat Analysis
- Customizable Risk Inform Policy
- Cyber-attacks trap
- Exclusions & port monitoring rule
- Event notification
- Log sender

Specifications and recommendations

HW models (multi-OS)	QGD-1600P	QGD-1602P-C3558-8G	QGD-1602P-C3758-16G
CPU/RAM	Intel Celeron 4C / 4GB	Intel Atom 4C / 8GB	Intel Atom 8C / 16G
Storage (manual added)	2 x 2.5-inch SATA bays	2 x M.2 NVMe 2280 slots or 2 x 2.5-inch SATA bays	2 x M.2 NVMe 2280 slots or 2 x 2.5-inch SATA bays
Switch	14 x 1GbE RJ45 + 2 x Combo (RJ45&SFP)1GbE	8 x 2.5GbE RJ45 8 x 1GbE RJ45 2 x 10GbE SFP+	8 x 2.5GbE RJ45 8 x 1GbE RJ45 2 x 10GbE SFP+
PoE	Yes	Yes	Yes
Management Port	1 x 1GbE RJ45	2 x 5GbE 2 x 1GbE	2 x 5GbE 2 x 1GbE
Recommended number of monitored edge devices	10 – 50 devices	30 – 80 devices	60 – 110 devices

Licenses

SKU	LS-ADRANDR-GL-1Y	LS-ADRANDR-GL-3Y
Time period	1 Year	3 Years



ADRA NDR

Rapid screening for intranets

ADRA NDR is based on the QGD-1600P/ QGD-1602P smart switch series, providing additional intranet rapid-screening for businesses and enterprises. ADRA NDR can be positioned at switch level to help manage, monitor, and isolate suspicious activities.

Core design concept to ADRA NDR

Adaptive Threat Detection

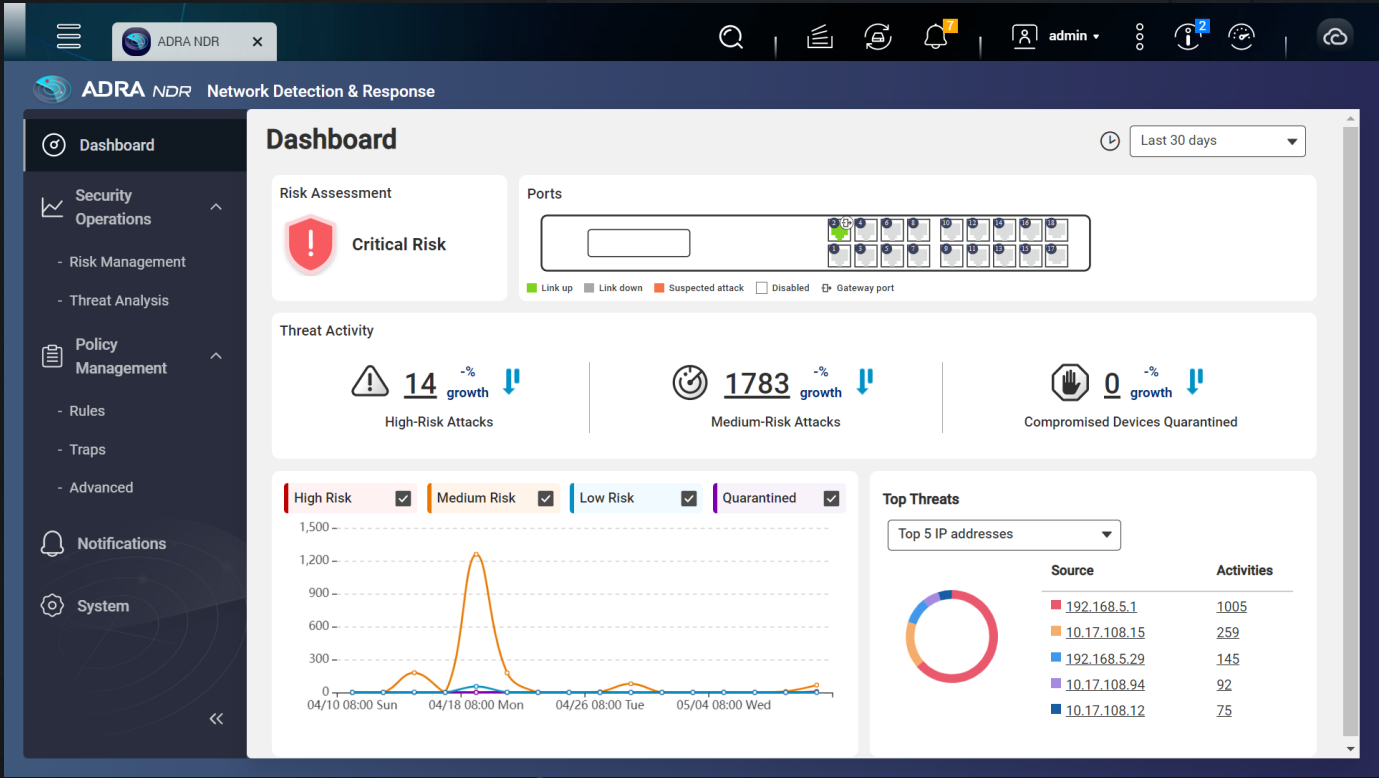
Focus on the beginning of intranet network threats, manage suspicious activities as early as possible.

Real-time Threat Analysis

Monitor lateral events and analyze threats to ensure first-time detection of suspicious activities.

Isolation Response

Isolate compromised edge devices to quarantine risks without affecting other edge devices at intranet level.



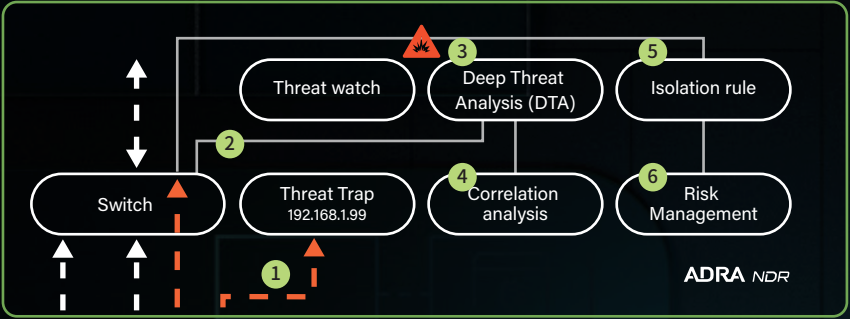
Real time status

Monitor risks threats and attain real-time status on a clear and concise dashboard.



Trap for threat

Compared with traditional methods that need a physical device as a honeypot, ADRA NDR can enable Traps directly, increasing detection rate.



Keep high capacity

The special packet analyzing flow design enables ADRA NDR to perform security checks and keep the capacity as same as a switch.