

QVR Licenses for NAS

The table provides a quick reference to license type of QVR products and may have changes.

Please refer to our software store for latest information:



Product	License	Type	Note
QVR Pro	Built-in	Free	QVR Pro on NAS includes 8 channels. This is bind to hardware and not transferrable.
	1ch, 4ch, 8ch	Lifetime	Additional Channel for QVR Pro. Can be accumulated.
	Unlimited Playback	Lifetime	Can playback recordings more than 14 days ago
	Gold	Lifetime	Additional 8 channel license Unlimited playback Can be managed by QVR Center
QVR Elite	Built-in	Free	QVR Elite on NAS includes 2 channels. This is bind to hardware and not transferrable.
	Channel	Month, Year, Tri-year subscription	QVR Elite on NAS includes 2 channels. This is bind to hardware and not transferrable.
QVR Pro/Elite	QVR AI Pack for NAS	Lifetime	Smart Search: Advanced search feature. Smart Client: Client for HDMI output.
QVR Center	Built-in	Free	QVR Center can manage 2 surveillance servers for free.
	Server	Month, Year, Tri-year subscription	When need to manage more than 2 servers. If the server has QVR Gold license, it can be added to QVR Center without additional license.
QVR Face Insight	Built-in	Free	QVR Face Insight provides 1 task and 3 face for evaluation.
QVR Face Insight/Tiger/Link	Tasks	Month, Year, Tri-year subscription	Analyze 1 task. Can be accumulated. The license between insight, tiger, and link are different.
	100, 1000, 10000 profiles	Month, Year, Tri-year subscription	The size of profile database. Can be accumulated. The license between insight, tiger, and link are different.
QVR Human	Built-in	Free	Provide 1 month trial for each NAS.
	Tasks	Month, Year, Tri-year subscription	Each license can create 1 analyzing task.
QVR DoorAccess	Door	Month, Year, Tri-year subscription	Each license can create 1 monitoring task for a door controller.

Lifetime license will bind to single device during the activation procedure and is not transferrable.
Subscription license can be deactivated and active on another device. The expiration date will not extend while deactivation.



QNAP Surveillance Products



NVR



QVR Pro & QVR Elite

The QVR Pro enables long-term service with a fixed cost and includes **8 FREE camera licenses** by default and up to 128 cameras on high-end NAS with additional license purchased from QNAP.

The QVR Elite is a subscription-based service giving flexible channels on demand, QVR Elite can manage up to 192 cameras on high-end NAS models and includes **2 FREE camera licenses** when running natively on QNAP NAS.



Share streams

The QVR Pro/Elite can share the channel, the viewers do not have to access the camera directly to obtain necessary streams.

Auto search and batch add cameras

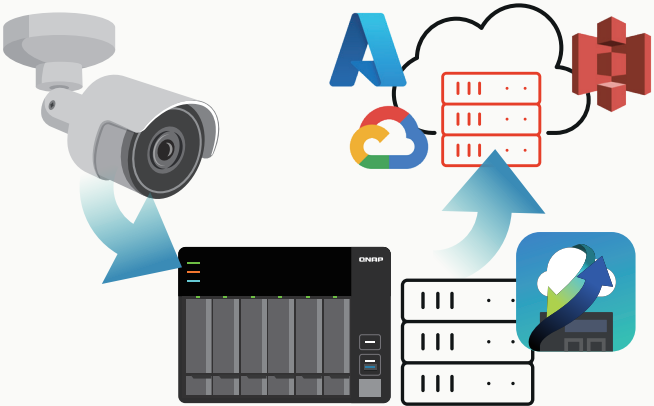
Even if your network environment uses multiple LANs, you can still use QVR Pro/Elite to discover and add cameras. Camera settings can also be imported using CSV format to ease the efforts.

Interface assignment

Assign a specific network interface for each camera to improve bandwidth load balancing and ensure video recording quality.

Record on local & cloud volume

QVR Pro/Elite can store recordings on local volumes or on cloud storage such as Amazon, Azure, Google, and other storage services mounted by QNAP HybridMount.



Supports variants of IP cameras

Supports generic ONVIF S, T, and G profiles, RTMP stream, and have dedicated profile for about 7,000 camera models from more than 180 brands. It is easy to find a proper camera to work with QVR Pro/Elite. And each camera can be configured separately.

Compatible List:



Event rule management

Triggered by single or multiple events, then do one or more actions from QVR Pro/Elite's event rule. For example, can receive custom external events and trigger external actions using an HTTP URL.



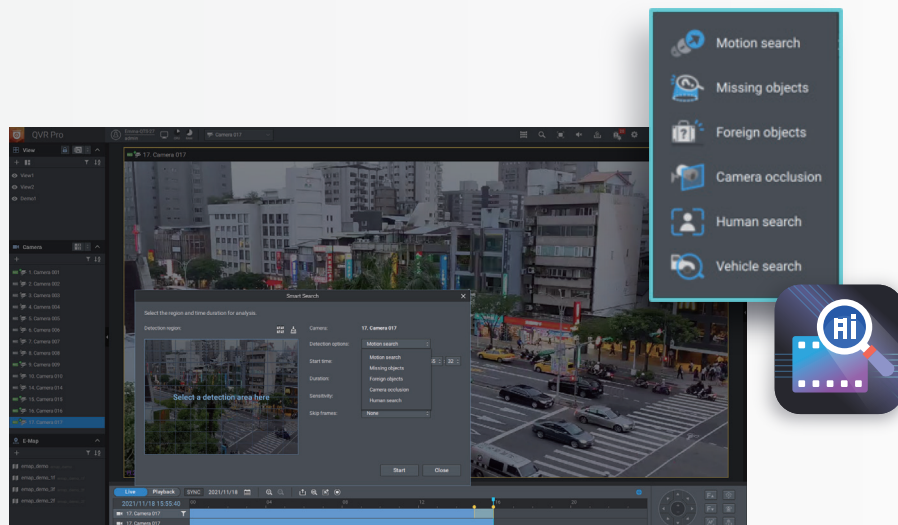
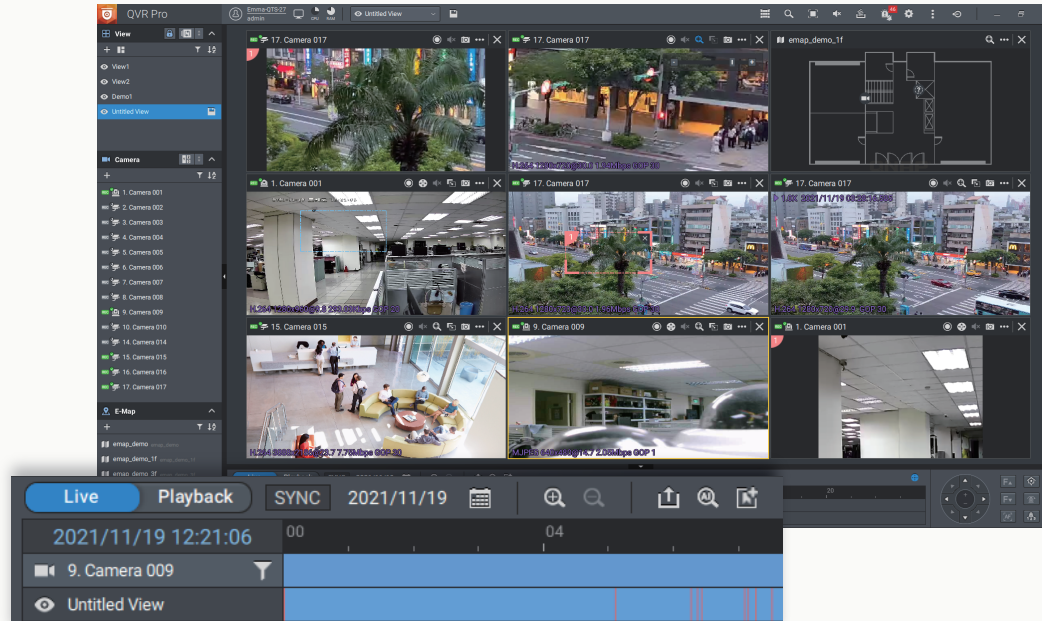
QVR Pro Client

One-for-all client

QVR Pro Client provides a unified user interface on Windows, macOS, and HDMI output on capable NAS models. The apps are also available on Android, iOS, and TV platforms. All the clients support QVR Pro/Elite, and QVR Center for manage multiple surveillance sites in the same view.

Live view and playback at same place

The playback and live can be displayed together. Does not have to switch between different interfaces. Multiple channels can also be synchronized while playback.



Fisheye de-warp allows lesser camera in wide area

Standard fisheye cameras available in the market are supported, and the Qdewarp technology can convert up to 9 selected area from a single fisheye camera into proportional ratios. Allows to monitor wide-area incidents with lesser camera.

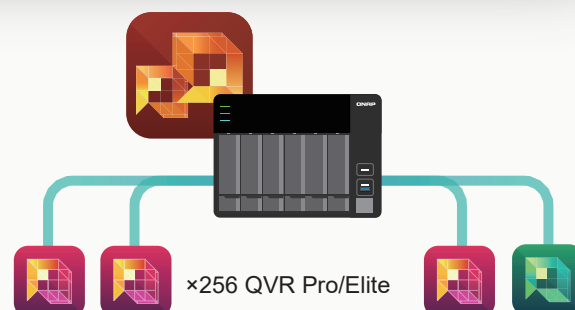
Search by different factors and AI

Not only timestamp, QVR Pro Client can invoke search by name registered in QVR Face, or by region motion, missing object, foreign object, and camera occlusion to decrease efforts of searching specific incidents from recordings.



QVR Center

QVR Center allows you to centrally manage multiple QVR Pro/Elite servers up to 256 servers and track all surveillance events at same portal. **QVR Center can manage up to 2 QVR Pro or QVR Elite server for FREE.** And a **QVR Pro with Gold license installed can be managed by QVR Center for FREE** as well. Furthermore, monthly/annually licenses to manage additional servers can be subscribed from QNAP software store.



QVR Guard

QVR Guard is a 1:1 fail-over protection application installed on another NAS that takes over recording tasks from the paired **QVR Pro** server when unexpected failure occurs.

Analysis

The QVR AI products provides real-time multi-channel analysis services for different purposes.



QVR Face

QVR Face is a real-time subscription-based facial recognition solution. Video analytics results can be used to set profiles, groups, and as event notifications by instant facial recognition.

Compare versions

Feature	Insight	Link	Tiger
Detection Mode	General (default): Suitable for door access control management or for retail. Restrict: Suitable for sensitive door access control management or attendance records.		
Mask Detection	V	V	X
TPU Support	V	X	X
Intel NAS	V	V	V
AMD NAS	X	V	X

Mask Detection

Recognize registered people even the mask is worn. Or detect if the mask is properly attached.

Everything is on local

All the analysis and face databased is on the local NAS. The information does not go through servers over Internet.



QVR Human

QVR Human uses the video stream from entries of a building to provide real-time counting data and trend to monitor when and how many people are in the area. The information can be used to estimate store traffic, popular sections, and collect peak hours information.



QVR DoorAccess

QVR DoorAccess is an intelligent door system that can be integrated into an existing door access system from AXIS and HUNDURE.

Configure rules

Schedule when and what group of people can access through.

Integrated access log

Provide a complete access list include by face, or by swiping id cards.

QVR Pro API

QVR Pro offers a complete API to allow flexible integration with other systems. Accessible information includes device authentication, camera control, logs, instant video streaming, and video playback. From video to motion, QVR Pro offers plenty of resources to make your system even more powerful.

How to get:

