



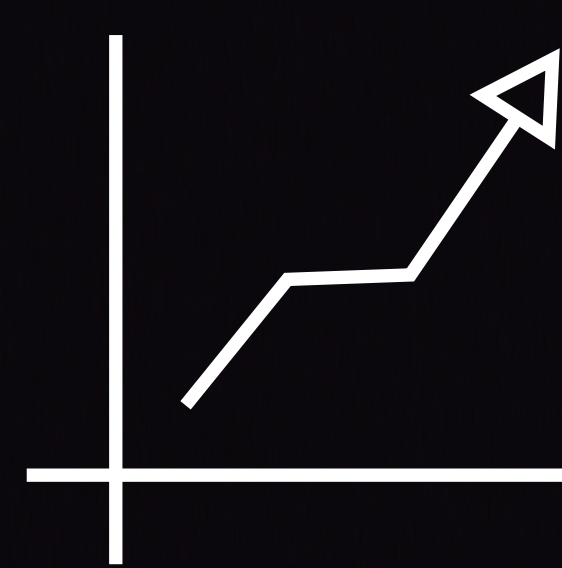
NVMe all-flash ZFS NAS

TDS-h2489FU

High performance, high capacity, and low latency all-flash storage solution

The TDS-h2489FU NVMe all-flash ZFS NAS delivers groundbreaking performance with Intel® Xeon® Silver 4300 processors (8 or 16 cores), dual-port 25GbE SFP28 and quad-port 2.5GbE and PCIe expandability. By leveraging the ZFS-based QuTS hero operating system the TDS-h2489FU has powerful data reduction and SSD optimization tools, maximizing all-flash investments for HPC, file server, and 4K/8K multimedia applications. The TDS-h2489FU meets stringent requirements for modern data centers, virtualization, and mission-critical backup/restore tasks.

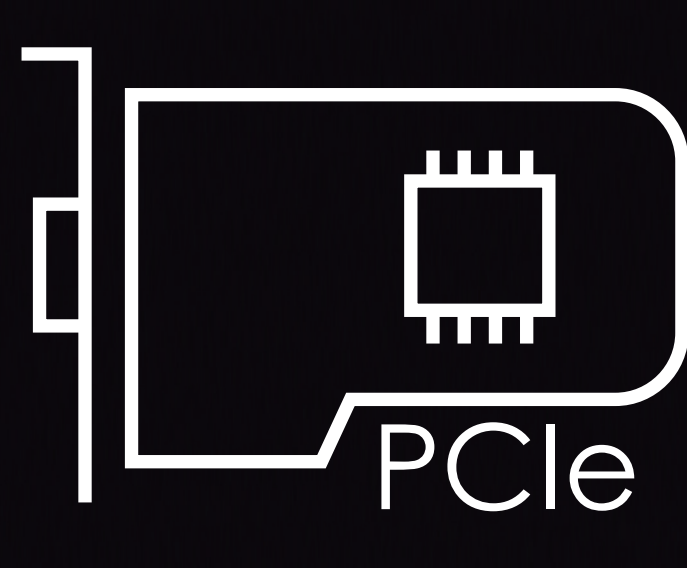
25GbE PCIe4.0



Optimized SSD
performance and lifespan

25
GbE

Empower high-speed data
transfer with dual 25GbE ports



PCIe expansion to
extend NAS functionality



An all-flash storage array
for optimal I/O and low latency

Available Models

P/N	Descriptions
TDS-h2489FU-4314-256G	Dual Intel® Xeon® Silver 4314 16-cores/32-threads processor (Turbo Boost up to 3.4 GHz), 256 GB DDR4 ECC RDIMM memory (8 x 32 GB)
TDS-h2489FU-4314-128G	Dual Intel® Xeon® Silver 4314 16-cores/32-threads processor (Turbo Boost up to 3.4 GHz), 128 GB DDR4 ECC RDIMM memory (8 x 16 GB)
TDS-h2489FU-4309Y-64G	Dual Intel® Xeon® Silver 4309Y 8-cores/16-threads processor (Turbo Boost up to 3.6 GHz), 64 GB DDR4 ECC RDIMM memory (8 x 8 GB)